

**Former Kerr-McGee Chemical Corporation
Superfund Site
Navassa, NC**

**Public Meeting
June 20, 2017**

**U.S. Environmental Protection Agency
North Carolina Department of Environmental Quality
Greenfield Environmental Multistate Trust LLC,
Trustee of the Multistate Environmental Response Trust**



Public Meeting Agenda

- ✓ Introductions
- ✓ Update on EPA Information Repository
- ✓ NCEERC Update
- ✓ RWG Update
- ✓ NC DEQ Update on Navassa Trustees Council and on Other Sites in the Area
- ✓ Overview and roles of EPA, NC DEQ, Multistate Trust and Stakeholders
- ✓ Status of the Site Investigations
 - Summary of Activities Completed in 2017
 - Work Planned for 2017
 - Timeline for Remainder of Cleanup
- ✓ Kerr-McGee Navassa Redevelopment Planning Initiative
- ✓ Questions and Discussion

Introductions

Tonya Spencer, EPA

Introductions – Tonya Spencer, EPA

- ✓ Navassa Superfund Site Cleanup Team
 - U.S. Environmental Protection Agency (EPA)
 - North Carolina Department of Environmental Quality (NC DEQ)
 - Multistate Environmental Response Trust (Multistate Trust)
- ✓ Navassa Community Economic & Environmental Re-Development Corporation (NCEERC) – Community group
 - Technical Assistance Grant (TAG) update
- ✓ Redevelopment Working Group (RWG) update
- ✓ Navassa Trustees Council
- ✓ Partners in other efforts
 - NC Department of Health and Human Services
 - National Oceanic and Atmospheric Administration (NOAA)
 - Natural resource restoration
 - North Carolina Division of Public Health (NCDPH)
 - Health education and outreach
 - University of North Carolina – Wilmington (UNCW)



Update on EPA Information Repository

**Public Meetings Every Quarter
Next Meeting September 12, 2017**



NCEERC Update

Chris Graham, NCEERC

RWG Update

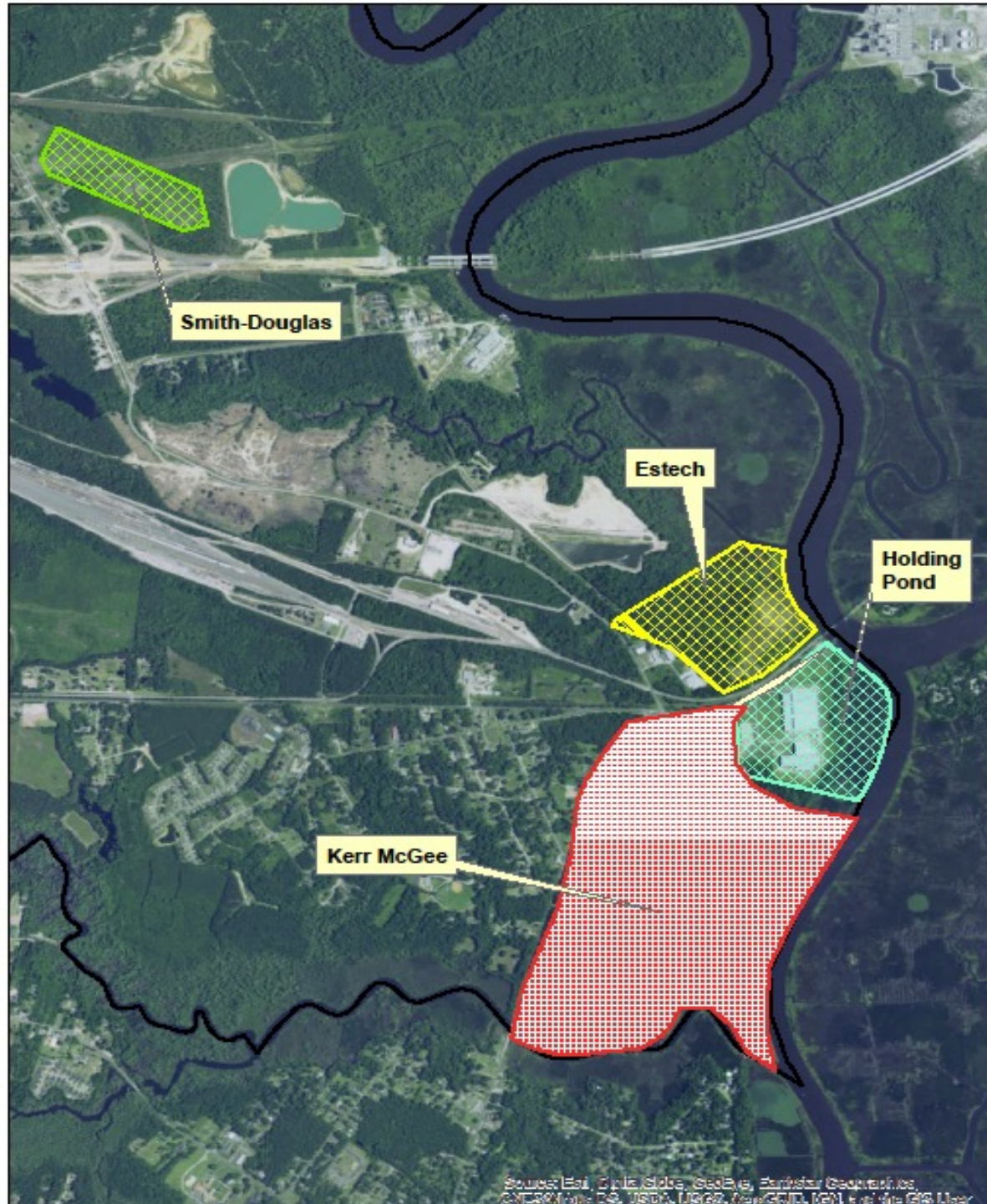
NC Department of Environmental Quality

Jim Bateson

NC DEQ Activities and Update on Navassa Trustees Council

Jim Bateson, NCDEQ





Overview of Cleanup

Erik Spalvins, EPA



Mission Statement

- Statutory Requirement
 - Protect human health and the environment
 - Hold a proposed plan public meeting and respond to comments in the Record of Decision (ROD)
- EPA, NCDEQ, Multistate Trust commitment:
 - Clean up the Site to enable reuse as supported by and beneficial to the community
 - Inform the public of the nature of the environmental issues and of the progress being made
 - Involve the public in the decision-making processes that will affect them and in the cleanup decisions under consideration
 - Conduct the cleanup so it can have a broad, positive community impact
- The role of the community - Provide Vision
 - Pick up where the Superfund cleanup stops



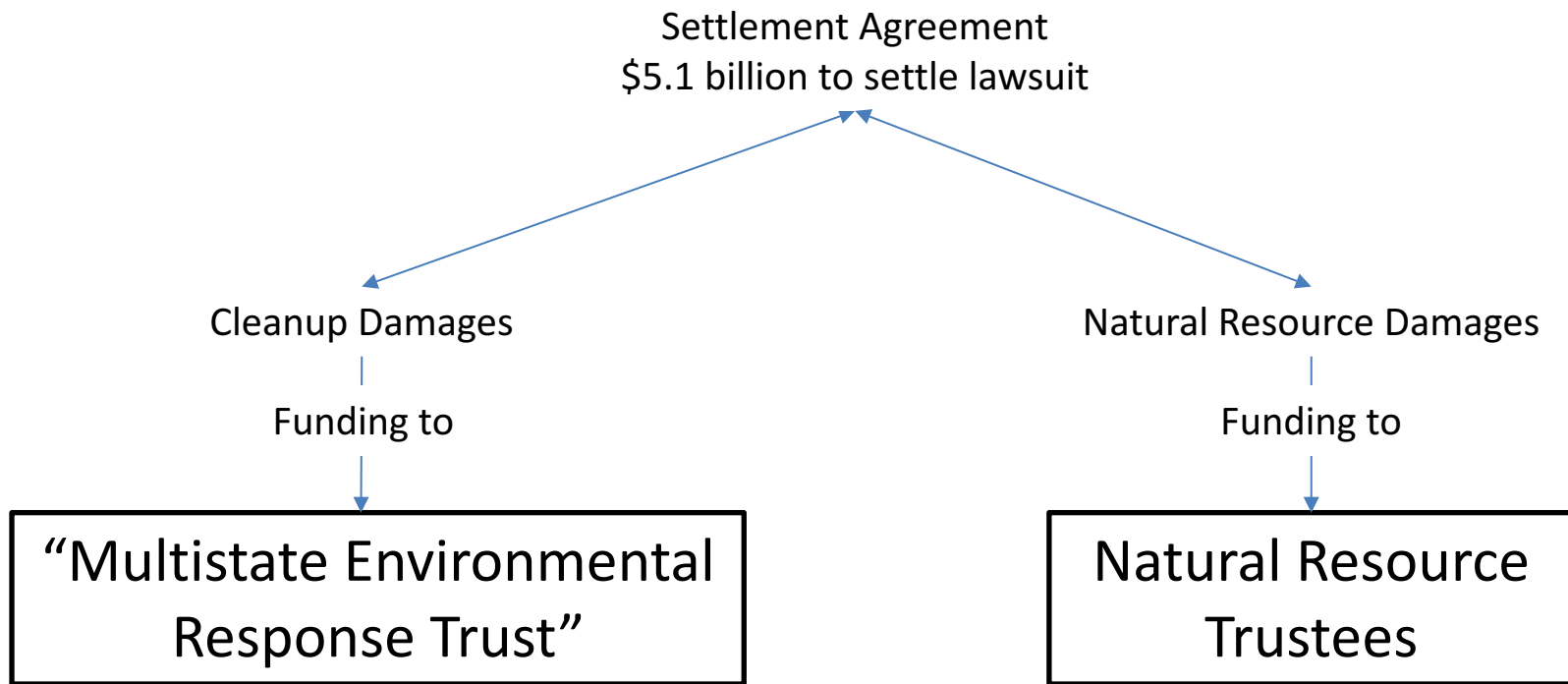
How we got here

- 2005, Kerr McGee spun off a company called “Tronox”
- Tronox had limited funds do to work and went bankrupt in 2009
- EPA took over investigation in 2010 and sampled the marsh, yards and wells
- February 2011 was the effective date of the Tronox Bankruptcy Environmental Settlement Agreement
 - Tronox set aside funds for cleanup and Natural Resource Restoration
 - Cleanup
 - About \$3.6 Million
 - Created “Multistate Environmental Response Trust”
 - EPA and NC DEQ are beneficiaries
 - Natural Resource Restoration
 - About \$900,000
 - Trustees are NOAA, NC DENR, FWS

How we got here

Tronox bankruptcy also created Anadarko Litigation Trust to:

- Prosecute lawsuit against Kerr-McGee/Anadarko
- Distribute proceeds (as determined by percentages in Tronox Settlement Agreement)



“Cleanup”

Total Funds about \$92 Million

Cleanup Beneficiaries: government agencies that would have been responsible for the cleanup as a result of the bankruptcy.



Cleanup Vision: Protect human health and the environment, and facilitate community-supported reuse compatible with the community's future.

Left over funds will go to other sites abandoned by Tronox that do not have enough funding.

“Restoration”

Total Funds about \$23 Million

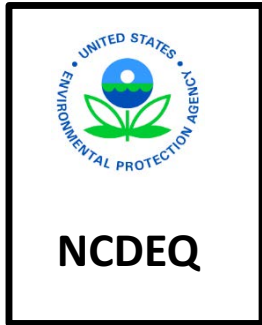
Natural Resource Trustees: government agencies responsible for the natural resources



Restoration Goal: Restore natural resources similar to those damaged by releases from the Site.

All funds will be used for restoration projects related to this release.

Cleanup Roles and Responsibilities



Joint activities

- Discuss and Plan Scope of Actions
- Coordinate with stakeholders and residents



“Multistate
Environmental
Response Trust”



EPA and NCDEQ Activities

- Ultimate responsibility for cleanup
- Review and Approve Work Plans
- Provide Oversight of Cleanup Work
- NC DEQ is responsible for long-term care, if needed

Multistate Trust Activities

- Conduct “Environmental Actions” per the Tronox Settlement Agreement
 - Investigation
 - Cleanup
 - Long-term care, etc.
- Own property and eventually convey property

Frequently asked questions

- What if there is not enough money?
 - If the Trust runs out of funds, the EPA and NCDEQ will take over the Site and fund the cleanup.
- What if there is money left over after the Trust completes the cleanup?
 - The funds will be shared with other sites left by Kerr-McGee.
- Where did the funding come from?
 - Tronox provided initial funds during bankruptcy settlement
 - Anadarko provided funds after settlement of Anadarko lawsuit
- Who is watching the money to make sure it is spent carefully?
 - The Multistate Trust is a fiduciary and coordinates directly with U.S. DOJ

Site Work Update

Richard Elliott, Multistate Trust

Supplemental Remedial Investigations (SRI)

Richard Elliott, Multistate Trust

Purpose of Supplemental Remedial Investigations (SRI): Characterize Nature and Extent of Contaminants of Concern

- Determine lateral and vertical distribution of contaminants
- Investigate all media: soil, sediment, groundwater and surface water
- Use SRI results to determine risk posed by contamination to human health and the environment

2017 SRI Data Collection Activities

✓ **First Quarter 2017**

- Geotechnical samples for vapor intrusion analysis
- Additional on-site and off-site monitoring wells
- Additional soil samples from northern areas of Site
- Additional soil borings for DNAPL investigations

✓ **Quarterly groundwater sampling in March, June, September and December**

✓ **Second quarterly groundwater sampling event began June 19, 2017**



DPT and Sonic Drill Rigs



Water Sampling Training



Water Sampling Set-up



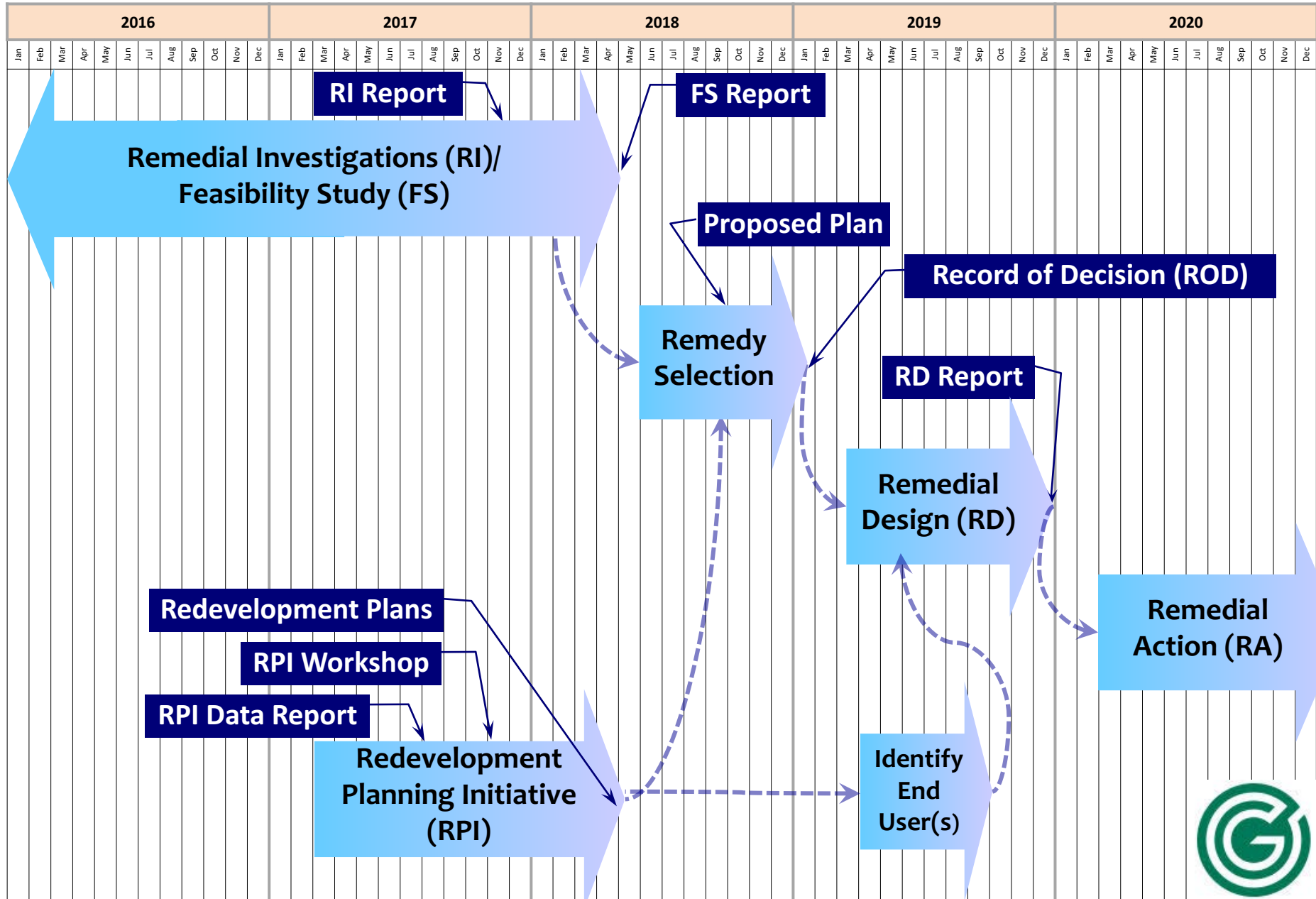
Creosote in Core Sample



2017 Risk Assessments and Feasibility Studies

- ✓ Risk Assessments
 - Human Health and Ecological Risk Assessments
 - Scheduled to be complete August 2017
- ✓ Remedial Investigation (RI) Report scheduled to be issued November 2017
- ✓ Feasibility Study (FS) scheduled to begin August 2017

Kerr-McGee Navassa Superfund Site Project Schedule



Kerr-McGee Redevelopment Planning Initiative (RPI)

Definitions

Remediation: The activities intended to reduce human and ecological exposure to contaminants. For Kerr McGee, this work is managed by the Multistate Trust.

Redevelopment: Returning the property to productive use. For Kerr McGee, the Multistate Trust is facilitating a process to identify potential future uses of the Site. The actual redevelopment will be implemented by one or more third parties.

Restoration: Covers activities designed to address damage or harm to ecosystems caused by contamination. For Kerr McGee, the Navassa Trustees Council is managing restoration activities.



Kerr-McGee Navassa Redevelopment Planning Initiative (RPI)

Cindy Brooks, Multistate Trust

Kerr-McGee Navassa Superfund Site Redevelopment Planning Initiative (RPI) Cindy Brooks—Multistate Trust

- **Frequently Asked Questions (FAQs)**
- **Opportunities for Community Input/Engagement**
 - **Redevelopment Working Group (RWG)**
 - **Community Survey**
 - **Focus Groups**
 - **Community Visioning Workshop**
 - **Open House**
- **RPI Process and Deliverables**
- **RPI Schedule**

Kerr-McGee Redevelopment Planning Initiative (RPI) Frequently Asked Questions (FAQs)

Q: What is the Kerr-McGee RPI?

A: The RPI is a planning process that engages the Navassa community in developing a potential plan or vision for future use of the Site.

Q: What will be the results of the Kerr-McGee RPI?

A: The primary RPI deliverable will be one or more “conceptual” master plan(s) depicting potential future use of the Kerr-McGee Site.

Q: How will the results of the Kerr-McGee RPI be used?

A: EPA may use the RPI results in selecting the Site cleanup plan. The Multistate Trust may use the RPI results to identify possible future users of the Site and, if approved by EPA and NCDEQ, to integrate future use into the cleanup plans.



Kerr-McGee Redevelopment Planning Initiative (RPI) Frequently Asked Questions (FAQs)

Q: Why is the Multistate Trust pursuing the Kerr-McGee RPI?

A: The Multistate Trust has elected to pursue the RPI because of its belief that the Navassa community should have a significant voice in how the Site will be reused in the future.

Q: Is the Multistate Trust required to prepare a redevelopment plan for the Kerr-McGee Site?

A: Redevelopment planning for the Site is not required by EPA, NCDEQ or the Superfund cleanup laws.

Q: Will the Navassa community approve who acquires the Kerr-McGee Site?

A: Under the Tronox bankruptcy settlement, EPA and the Navassa Trustees Council are the only entities that can approve a transfer or sale of the Site.



Kerr-McGee

Redevelopment Planning Initiative (RPI)

Opportunities for Community Input/Engagement

- ✓ **Redevelopment Working Group (RWG)**
- ✓ **Community Survey and Interviews**
- ✓ **Community Visioning Workshop**
- ✓ **Open House**

Kerr-McGee Redevelopment Planning Initiative (RPI) Redevelopment Working Group

Role of the Redevelopment Working Group (RWG)

- ✓ **Act as steering committee for Kerr-McGee RPI**
- ✓ **Help engage broad cross-section of residents and community stakeholders in Kerr-McGee RPI process**
- ✓ **Provide insight into community goals and concerns about future reuse**
- ✓ **Review and comment on key RPI deliverables**

Bridging the Gateway to a Millennial Community



Kerr-McGee Redevelopment Planning Initiative (RPI)

Redevelopment Working Group

Redevelopment Working Group (RWG) Participants

- ✓ **Town of Navassa**
 - Town Council (Councilors Bethel, Brown, Burns, Merrick, and Mooring)
 - Mayor Willis
- ✓ **Residents of Navassa**
 - Kalithah Crawford, Malcolm Dorman and Melvin Walker
- ✓ **Navassa Community Economic & Environmental Redevelopment Corporation (NCEERC)**
 - ✓ LaTanya Beatty-Nixon
 - ✓ Chris Graham
 - ✓ Conswalia Green
 - ✓ Marcell Hatten
 - ✓ Clarence Toland
- ✓ **Other Stakeholders**
 - ✓ Resea Willis/President/Brunswick Housing Opportunities (BHO)
 - ✓ Veronica Carter/Board Member/North Carolina Coastal Federation (NCCF)



Kerr-McGee Redevelopment Planning Initiative (RPI) Community Survey

✓ Purpose of Community Survey

- Community input on redevelopment goals/priorities
- Broad spectrum of stakeholder interests
- Results to be used in Community Visioning Workshop

✓ Options for submitting completed surveys

- U.S. Mail
- Online (Survey Monkey)
- Drop box at Availability Sessions and Town Hall
- Return to Multistate Trust (Chris, Richard or Cindy)

Kerr-McGee Redevelopment Planning Initiative (RPI)

Community Visioning Workshop

Purpose

- ✓ Define community vision for future of Kerr-McGee Site
- ✓ Develop clear, realistic ideas for redevelopment that address community goals and priorities
- ✓ Provide real-time input to planning process

Format/Process

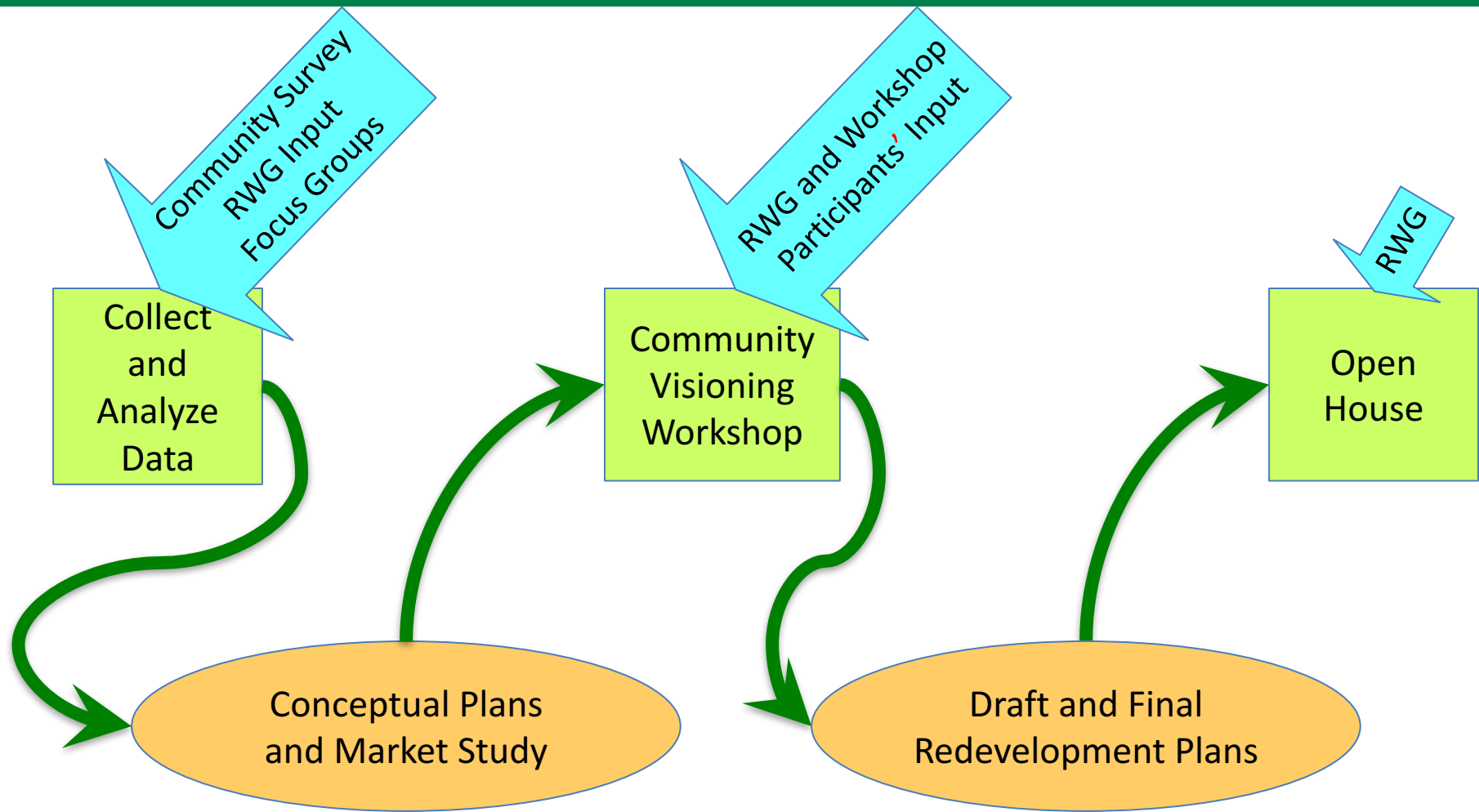
- ✓ Building on data collection results, three-day intensive planning sessions facilitated by land use planners
- ✓ Organized into subgroups to focus on key reuse options
- ✓ Forum for brainstorming ideas and providing immediate feedback to land use planners
- ✓ Some participants to be recommended by RWG

Schedule: Thursday, November 30 through Saturday, December 2, 2017



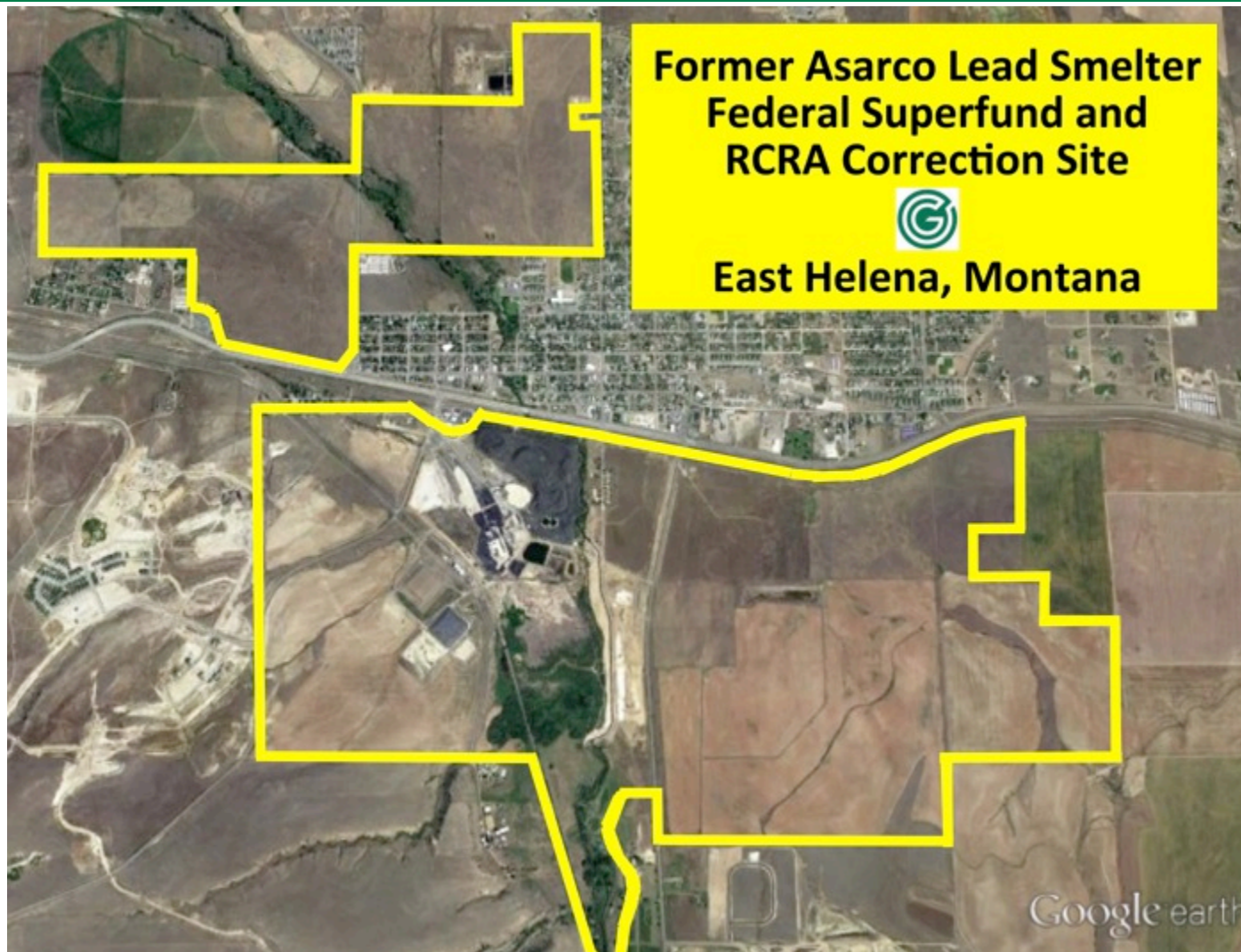
Kerr-McGee Redevelopment Planning Initiative (RPI)

Process and Deliverables



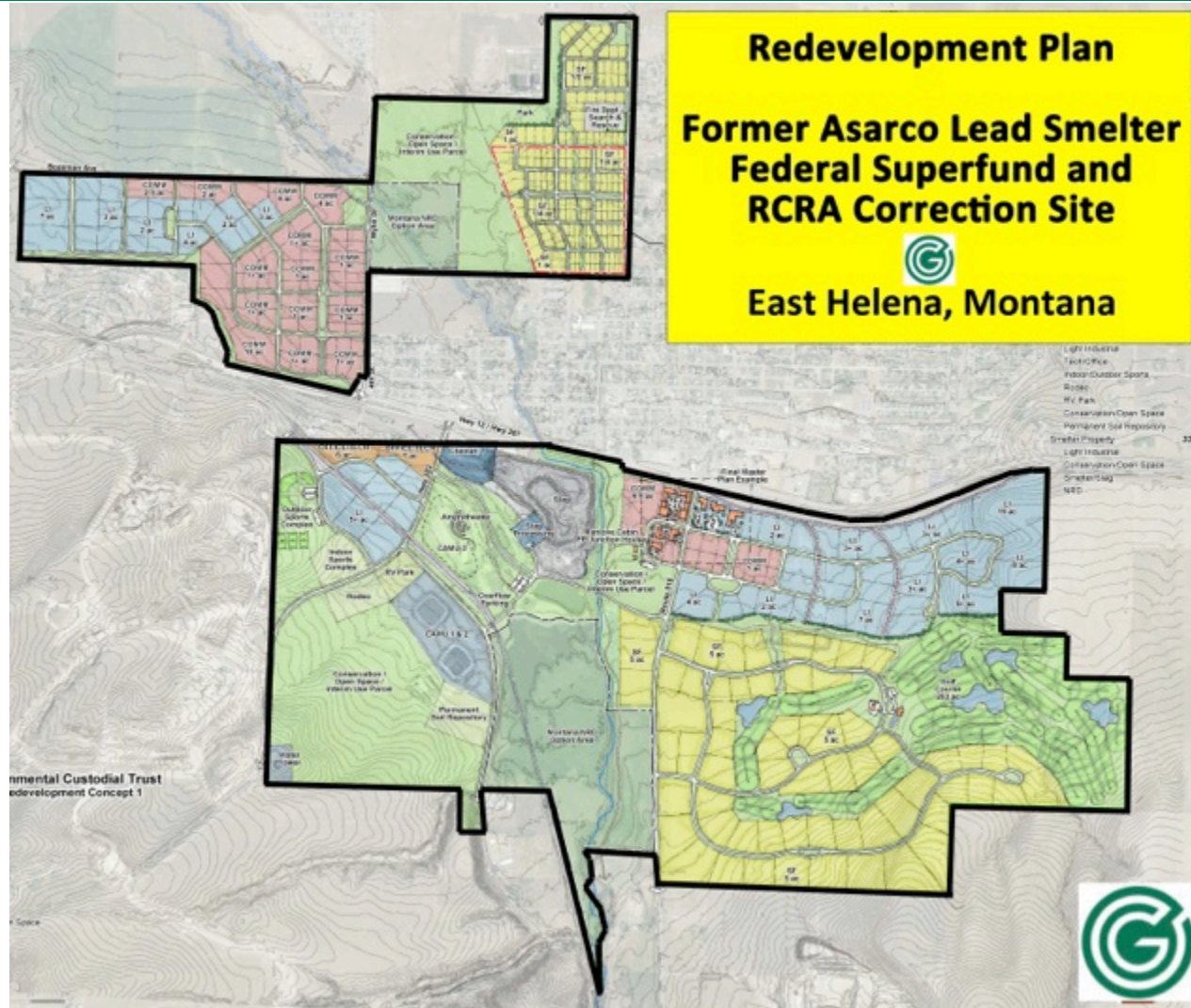
Example Redevelopment Plans

Asarco Superfund Site, East Helena, Montana



Example Redevelopment Plans

Asarco Superfund Site, East Helena, Montana



Example Redevelopment Plans

Industri-plex Superfund Site, Woburn, Massachusetts



**Industri-plex Federal Superfund Site
Woburn, Massachusetts**



Example Redevelopment Plans

Industri-plex Superfund Site, Woburn, Massachusetts



**Redevelopment Plan
Industri-plex Superfund Site
Woburn, Massachusetts**



Example Redevelopment Plan

Kerr-McGee Superfund Site, Columbus, Mississippi



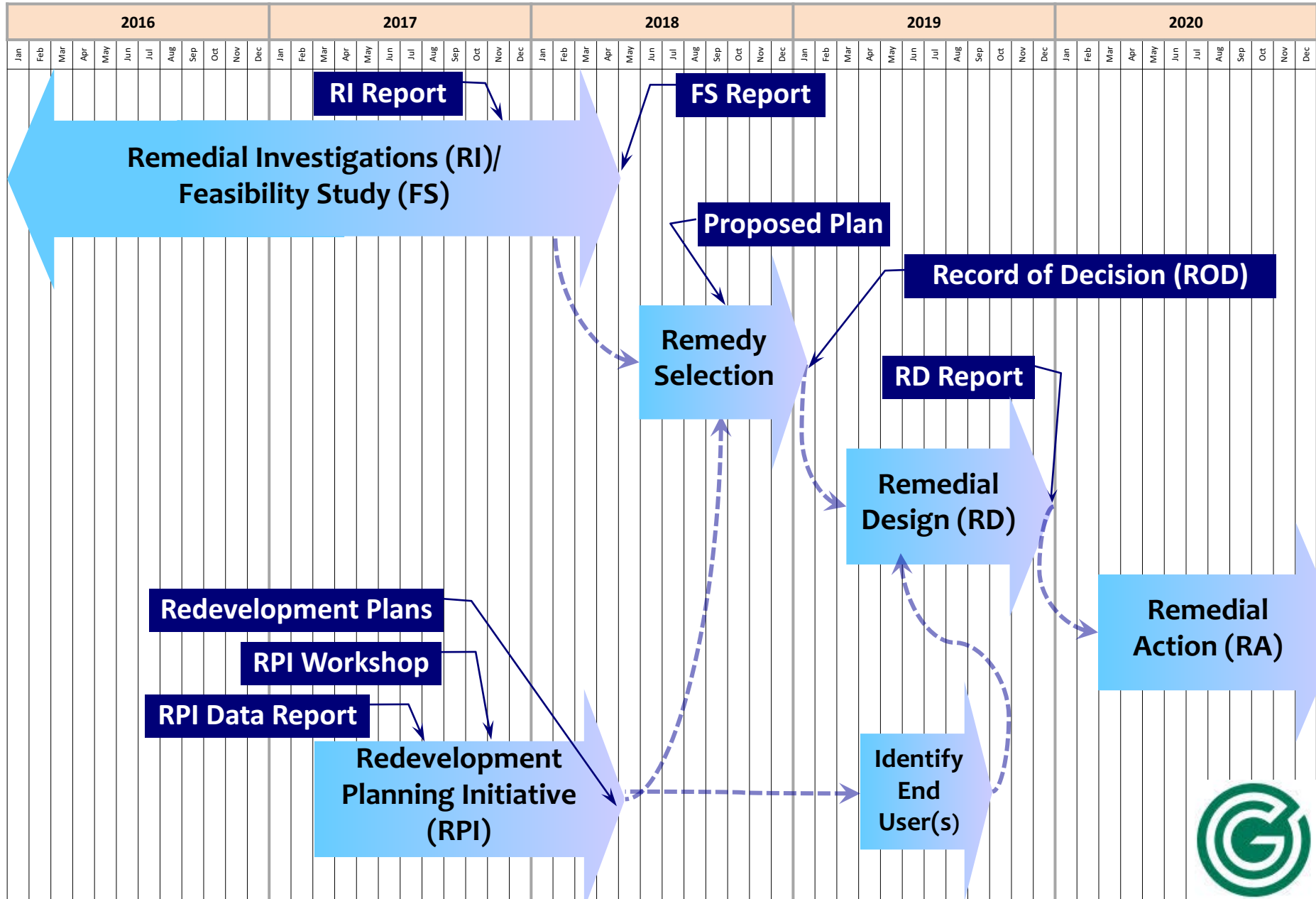
**Kerr-McGee Chemical Corporation Superfund Site
Columbus, Mississippi**



Example Redevelopment Plan Kerr-McGee Superfund Site, Columbus, Mississippi



Kerr-McGee Navassa Superfund Site Project Schedule



Contact Information

- Erik Spalvins, EPA Remedial Project Manager
 - (404) 562-8938, spalvins.erik@epa.gov
- Tonya Spencer, EPA Community Involvement Coordinator
 - (404) 562-8463, spencer.latonya@epa.gov
- David Mattison, NCDEQ Superfund Section Project Manager
 - (919) 707-8336, david.mattison@ncdenr.gov
- Cindy Brooks, Multistate Trust Managing Principal
 - (617) 448-9762, cb@g-etg.com
- Richard Elliott, Multistate Trust Project Manager
 - (617) 953-1154, re@g-etg.com



Questions and Discussion