

Quarterly Update Fact Sheet, 2nd Quarter 2020

Kerr-McGee Chemical Corp – Navassa Superfund Site, Navassa, NC

The purpose of this fact sheet is to provide the quarterly update to the Navassa community and other stakeholders about remediation and other activities at the Kerr-McGee Chemical Corp – Navassa Superfund Site (the Site). This fact sheet was prepared jointly by the U.S. Environmental Protection Agency (EPA), the North Carolina Department of Environmental Quality (NCDEQ), and the Multistate Environmental Response Trust (the Multistate Trust).

Progress on Site activities since the January 2020 quarterly community meeting

- **OU1** (the portion of Treated and Untreated Wood Storage Areas requiring no remedial action to meet residential use criteria): Based on public comments received in response to the Operable Unit 1 (OU1) Proposed Plan, EPA decided to reevaluate OU1 for residential land use. See Figure 1. EPA, NCDEQ, and the Multistate Trust developed a sampling approach for residential risk assessment.
- **OU2** (the portion of Treated and Untreated Wood Storage Areas requiring remedial action to meet residential use criteria): The Multistate Trust developed an invertebrate sampling approach to evaluate ecological risk in OU2.
- **OU3** (Southern Marsh): The Multistate Trust developed a sediment and surface water sampling approach, and is preparing to conduct a drone-based infrared survey.
- **Property Management:** The Multistate Trust continued to provide oversight of installation of Brunswick County Wastewater Treatment Plant force main.

The Multistate Trust, EPA, and NCDEQ agreed to delay groundwater sampling (now scheduled to begin the week of May 11) and the in-person, quarterly public meeting because of travel restrictions, the State of North Carolina (NC) Stay At Home Order (modified effective May 8), and other guidance. There has been little or no delay of office-based activities, such as preparing and reviewing technical documents. Multistate Trust contractors continue to update their Site health and safety plans to comply with evolving federal, state, and local COVID-19 guidance. Field activities will resume in accordance with all applicable COVID-19 guidelines.

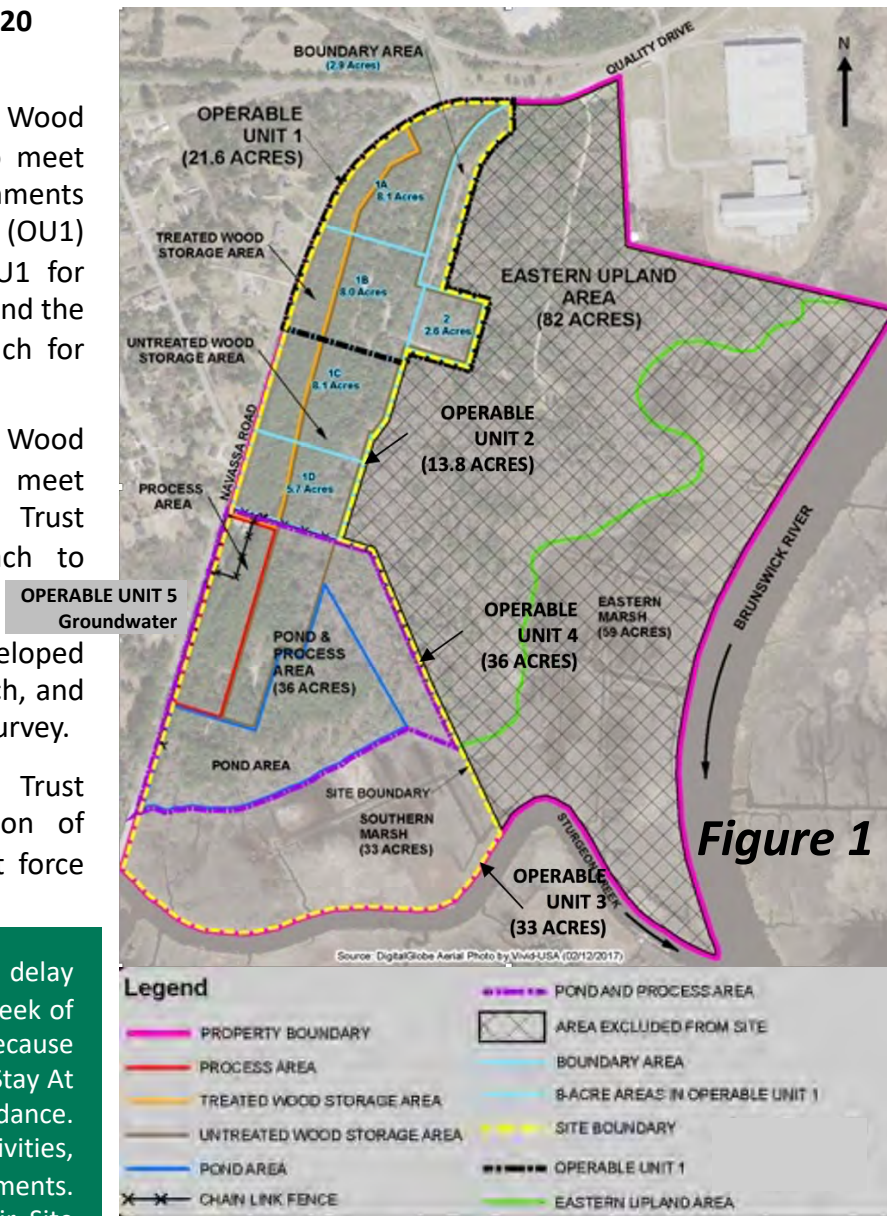


Figure 1 shows Operable Units 1 through 5, the Eastern Upland Area, and the Eastern and Southern Marshes at the Kerr-McGee Chemical Corp – Navassa Superfund Site in Navassa, NC.

Operable Unit 1 Proposed Plan Update, 2nd Quarter 2020

The U.S. Environmental Protection Agency (EPA) released the Proposed Plan for Operable Unit 1 (OU1) for public comment on October 9, 2019. The Proposed Plan identified a No Action Remedy as the Preferred Alternative for a 21.6-acre OU1 area identified for planned industrial, commercial and recreational land use. *See Figure 1.* EPA reviewed all written and verbal comments submitted during the public comment period, including a request from the Mayor of Navassa to change the anticipated land use. On February 24, 2020, the Navassa Town Council voted to develop additional clarification of the Town's position on land uses for OU1. On March 10, 2020, the Town Council provided a "Letter of Position" to EPA, which clearly states that the Town Council would like to pursue redevelopment scenarios in OU1 that would include residential uses. Based on this input from the Town of Navassa, EPA decided to reevaluate OU1 for residential land use.

EPA and NCDEQ agreed that additional sampling is needed to conduct a residential land-use evaluation. EPA, NCDEQ, and the Multistate Trust developed a sampling approach in March 2020. The sampling approach meets both EPA's Superfund requirements for a residential Human Health Risk Assessment and NCDEQ's statutory requirements for unrestricted use (no land-use restrictions). The main feature of the expanded sampling approach is dividing OU1 and OU2 into quarter-acre sampling units to represent potential residential exposure to soil. The Multistate Trust is currently developing a detailed sampling plan for EPA and NCDEQ review.

The sampling approach for OU1 is part of EPA's sitewide strategy to speed up redevelopment. After the Record of Decision for OU1 is signed, EPA will pursue deletion of OU1 from the National Priorities List, which will create additional incentives and opportunities for development.

The Multistate Trust is a private, independent trust that was created as part of the Tronox bankruptcy settlement to own, manage, remediate, and facilitate safe, beneficial reuse of the Site in Navassa.

EPA is the lead agency, which approves Multistate Trust remediation plans and budgets. NCDEQ is the support, or non-lead, agency, which consults with EPA on Multistate Trust plans and budgets.

For More Information

Multistate Trust website <https://multi-trust.org/navassa-north-carolina>
EPA website <https://www.epa.gov/superfund/kerr-mcgee-chemical-corp>

COVID-19 (Coronavirus) Update, 2nd Quarter 2020

The Multistate Trust

The Multistate Trust's goal is to continue work on activities that can be done during the pandemic. The Multistate Trust is proceeding with field preparation work that can be performed while following applicable health and safety guidance and stay-at-home orders, so that sampling and other environmental actions can resume when the COVID-19 risk has diminished. Any Site-related activities will be conducted in accordance with state, local, and federal COVID-19 guidelines.

U.S Environmental Protection Agency (EPA)

- EPA's highest priority is protecting the health and safety of the public, as well as maintaining the health and safety of EPA staff and remediation partners. The protection of health and safety requires close coordination with federal, state, and local health authorities. EPA has postponed in-person quarterly public meetings and face-to-face interactions consistent with current [COVID-19 guidance from the CDC \(https://www.cdc.gov/coronavirus/2019-ncov\)](https://www.cdc.gov/coronavirus/2019-ncov) and other federal, state, and local officials. This fact sheet is part of EPA's effort to keep in contact with the community.

EPA's approach in Navassa is consistent with EPA's interim [guidance](#), dated April 10, 2020:

- **Consider Site-specific factors when deciding on whether response actions will continue or be reduced, paused or resumed:** The current Site conditions do not pose an imminent and substantial endangerment to human health or the environment. The groundwater sampling delay until the week of May 11 will not create additional exposure.
- **Work within applicable enforcement instruments:** EPA, NCDEQ, and the Multistate Trust will continue to operate according to the Multistate Environmental Response Trust Agreement, CERCLA, and other state and federal guidelines.
- **Conduct non-field Site work:** The Site team will continue office-based work that will allow field work to resume safely and efficiently.
- **Plan for next steps after pausing Site work:** EPA will monitor Site conditions and help plan the logistics for resuming field work as soon as possible when appropriate.

North Carolina Department of Environmental Quality (NCDEQ)

- North Carolina Department of Health and Human Services (NCDHHS) Coronavirus Disease 2019 (COVID-19) Response in North Carolina <http://www.ncdhhs.gov/coronavirus>
- Exec. Order No. 138 Easing Restrictions on Travel, Business Operations, and Mass Gatherings: Phase 1 <https://files.nc.gov/governor/documents/files/EO138-Phase-1.pdf>
- North Carolina: Staying Ahead of the Curve, May 5, 2020 https://files.nc.gov/governor/documents/files/NCDHHS_PhaseOne.pdf
- Frequently Asked Questions for Executive Order No. 138 <https://files.nc.gov/governor/documents/files/FAQs-for-Phase-1-EO-FINAL.pdf>
- What's new in Phase One? <https://files.nc.gov/governor/documents/files/Phase-1-Side-by-Side.pdf>
- NC Gov. Cooper Announces Modified Stay At Home Order and Transition to Phase 1 of Easing Restrictions <https://governor.nc.gov/news/governor-cooper-announces-modified-stay-home-order-and-transition-phase-1-easing-restrictions>

2020 Planned Activities, Kerr-McGee Navassa Site, 2nd Quarter 2020

OU1 / OU2 Treated and Untreated Wood Storage Areas

- Develop soil sampling work plan for residential land use evaluation and perform field work
- Conduct risk analysis to support potential future residential use and update the Human Health Risk Assessment

OU2 (the portion of Treated and Untreated Wood Storage Areas requiring remedial action to meet residential use criteria)

- Develop invertebrate sampling work plan (to evaluate ecological risk) and perform field work
- Conduct ecological risk analysis and update the Baseline Ecological Risk Assessment (BERA)

OU3 Southern Marsh

- Conduct drone-based surface water thermal imaging survey and multi-spectral vegetation imaging survey of marsh areas
- Develop sediment and surface water sampling work plan and conduct field work
- Conduct ecological risk analysis and update the BERA
- Start remedial alternatives analysis

OU4 Pond and Process Area

- Conduct subsurface soil sampling to improve understanding of subsurface geology and aquifer geotechnical parameters

OU5 Groundwater

- Conduct two groundwater monitoring well sampling events
- Install new monitoring wells in the Southern Marsh
- Remove six monitoring wells with a history of being below the contaminant detection limit

Property Management and Disposition

- Continue to provide oversight of installation of Brunswick County Wastewater Treatment Plant force main
- Continue working with the N.C. Coastal Land Trust on potential property conveyance and long-term stewardship (primarily intended for use by proposed cultural center and nature park)
- Prepare to identify purchaser to develop a portion of the property to create jobs and expand tax base

Contact Information

NCDEQ

David Mattison
Superfund Section
Project Manager
(919) 707-8336
david.mattison@
ncdenr.gov

EPA

Erik Spalvins
Remedial Project
Manager
(404) 562-8938
spalvins.erik@
epa.gov

EPA

Tonya Spencer-Harvey
Community Involvement
Coordinator
(404) 562-8463
spencer.latonya@
epa.gov

Multistate Trust

Richard Elliott
Project Manager
(617) 953-1154
re@g-etg.com